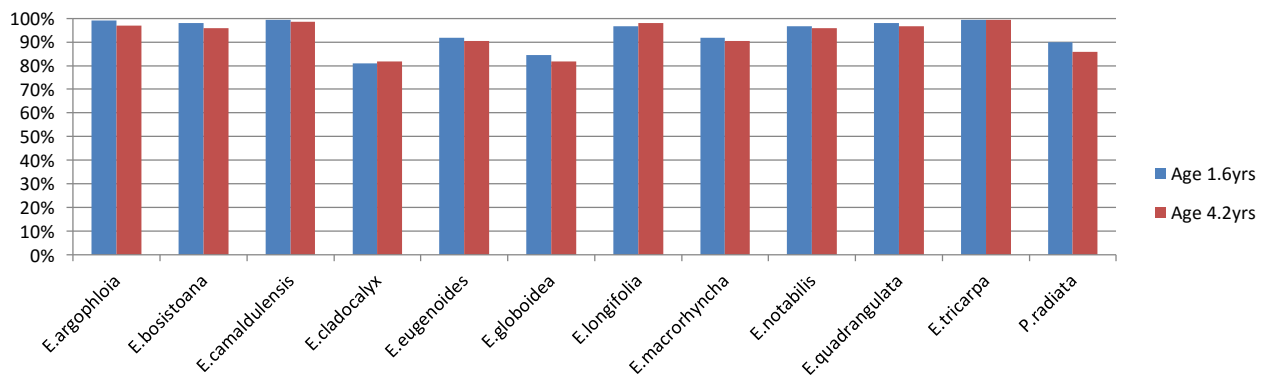


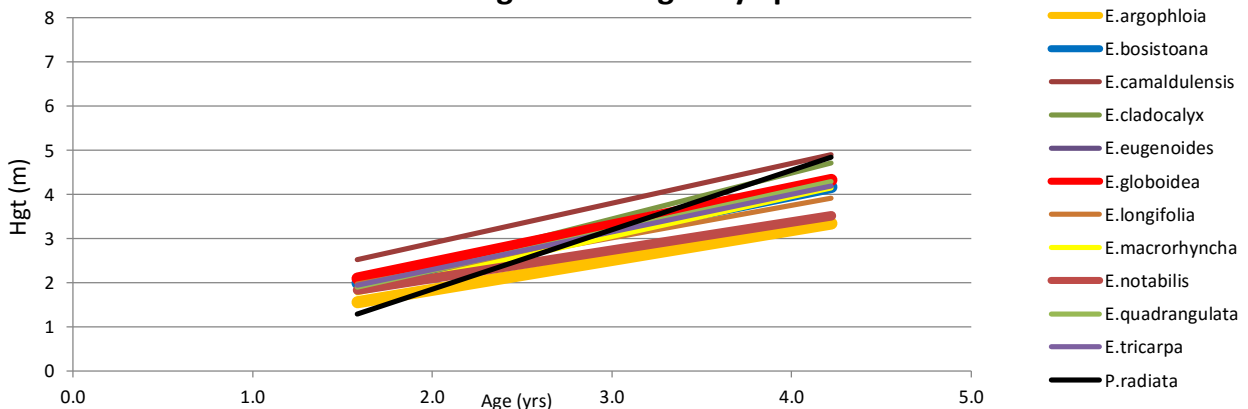
## TRIAL SUMMARY: SAGGERS 2011 DEMO TRIAL

Species	No. Hgt Trees		Min Hgt (m)		Avg Hgt (m)		Max Hgt (m)		% Survival	
	Age		Age		Age		Age		Age	
	1.6	4.2	1.6	4.2	1.6	4.2	1.6	4.2	1.6	4.2
<i>E. argophloia</i>	95	91	0.5	1.8	1.6	3.3	2.4	5.1	99%	97%
<i>E. bosistoana</i>	141	140	1.0	1.5	2.0	4.2	3.5	6.1	98%	96%
<i>E. camaldulensis</i>	145	93	1.0	2.1	2.5	4.9	3.9	7.6	99%	99%
<i>E. cladocalyx</i>	118	119	1.0	3.0	2.0	4.7	3.2	7.1	81%	82%
<i>E. eugenoides</i>	127	130	1.0	1.1	1.9	4.3	3.1	6.8	92%	90%
<i>E. globoidea</i>	121	111	1.0	1.8	2.1	4.3	3.4	6.1	84%	82%
<i>E. longifolia</i>	133	142	1.0	1.6	2.0	3.9	3.0	6.3	97%	98%
<i>E. macrorhyncha</i>	132	126	0.5	1.7	1.8	4.1	3.5	6.3	92%	90%
<i>E. notabilis</i>	135	86	1.0	1.6	1.8	3.5	3.0	6.4	97%	96%
<i>E. quadrangulata</i>	140	139	1.0	2.0	1.9	4.3	3.4	7.5	98%	97%
<i>E. tricarpa</i>	142	96	1.1	2.2	1.9	4.2	3.0	5.5	99%	99%
<i>P. radiata</i>	88	42	0.7	3.3	1.3	4.8	2.0	6.1	90%	86%

### Survival By Species and Age



### Average Tree Height By Species



### Max Tree Height By Species

